



PRSRT STD  
ECRWSS  
U.S. POSTAGE  
PAID  
EDDM Retail

\*\*\*\*\*ECRWSS\*\*\*\*\*

LOCAL  
POSTAL CUSTOMER

## City of Rio Dell Summer 2022 Newsletter

City of Rio Dell  
675 Wildwood Avenue  
Rio Dell, CA. 95562  
City Hall: (707) 764-3532  
Police Department: (707) 764-5641

**City Council Meetings:** The City Council meets the first and third Tuesday of each month at 6:30 P.M. in the Council Chambers at City Hall. The City encourages residents to attend the meetings.

**City Council Members:** Mayor - Debra Garnes, Julie Woodall, Gordon Johnson, Frank Wilson and Amanda Carter

**Planning Commission Meetings:** The Planning Commission meets the fourth Tuesday of each month. The Commission meets at 6:30 P.M. in the Council Chambers at City Hall.

**Planning Commission Members:** Chairperson - Nick Angeloff, Jacqui Wilson, Patrick Knight, Alice Millington, and Larry Arsenault. The Alternate member seat is Arnie Kemp.

# ***2021 City of Rio Dell Annual Consumer Confidence Report***

Water System Name: **City of Rio Dell - System No. 1210012** Report Date: **June 6, 2022**

*We test the drinking water quality for many constituents as required by state and federal regulations. This report shows the results of our monitoring for the period of **January 1 - December 31, 2021** and may include earlier monitoring data.*

**Este informe contiene información muy importante sobre su agua potable. Tradúzcalo ó hable con alguien que lo entienda bien.**

---

**Type of water source(s) in use** Surface and Ground Water  
**Name & location of source(s):** Eel River and Wells, Rio Dell

---

## **Drinking Water Source Assessment information:**

An assessment of the drinking water source was completed in 2003.

The source is considered most vulnerable to the following activities not associated with any detected contaminants:

Automobile - Gas stations

Known Contaminant Plumes

Septic systems - high density

Underground storage tanks - Confirmed leaking tanks

Wastewater treatment plants and disposal facilities.

---

**In order to ensure that tap water is safe to drink**, the USEPA and the State Water Resources Control Board (State Board) prescribe regulations that limit the amount of certain contaminants in water provided by public water systems. State Board regulations also establish limits for contaminants in bottled water that provide the same protection for public health.

---

## **How can I get involved?**

City Council meetings are on the FIRST and THIRD Tuesday of every month at 6:30 pm at Rio Dell City Hall, 675 Wildwood Ave. Call 764-3532 during business hours for more information. Also Call 1 888 475 4499 and enter meeting ID 987 154 0944 to participate in the City Council Zoom Meetings.

---

## **For more information please contact:**

Randy Jensen

Address:

675 Wildwood Ave.

Rio Dell, CA 95562

Phone #: 707-764-3541

Fax #: 707-764-5480

Email : [jensenr@cityofriodell.ca.gov](mailto:jensenr@cityofriodell.ca.gov)

Website : [www.cityofriodell.ca.gov](http://www.cityofriodell.ca.gov)

---

## **Conservation Tips**

Did you know that the average Californian uses approximately 196 gallons of water per day? Luckily, there are many low-cost or no-cost ways to conserve water. Water your lawn at the least sunny times of the day. Fix toilet and faucet leaks. Take short showers - a 5-minute shower uses 4 to 5 gallons of water compared to up to 50 gallons for a bath. Turn the faucet off while brushing your teeth and shaving; 3-5 gallons go down the drain per minute. Teach your kids about water conservation to ensure a future generation that uses water wisely. Make it a family effort to reduce next month's water bill!

---

**Rio Dell's Water Bills charge water usage by the number of "UNITS"- 1 unit = 748 gallons.**

---

## Additional General Information on Drinking Water

Drinking water, including bottled water, may reasonably be expected to contain at least small amounts of some contaminants. The presence of contaminants does not necessarily indicate that the water poses a health risk. More information about contaminants and potential health effects can be obtained by calling the U.S. EPA's Safe Drinking Water Hotline (1-800-426-4791).

Some people may be more vulnerable to contaminants in drinking water than the general population. Immuno-compromised persons such as persons with cancer undergoing chemotherapy, persons who have undergone organ transplants, people with HIV/AIDS or other immune system disorders, some elderly, and infants can be particularly at risk from infections. These people should seek advice about drinking water from their health care providers. U.S. EPA/Centers for Disease Control (CDC) guidelines on appropriate means to lessen the risk of infection by *Cryptosporidium* and other microbial contaminants are available from the Safe Drinking Water Hotline (1-800-426-4791).

**Lead-Specific Language for Community Water Systems:** If present, elevated levels of lead can cause serious health problems, especially for pregnant women and young children. Lead in drinking water is primarily from materials and components associated with service lines and home plumbing. City of Rio Dell is responsible for providing high quality drinking water, but cannot control the variety of materials used in plumbing components. When your water has been sitting for several hours, you can minimize the potential for lead exposure by flushing your tap for 30 seconds to 2 minutes before using water for drinking or cooking. [Optional: If you do so, you may wish to collect the flushed water and reuse it for another beneficial purpose, such as watering plants.] If you are concerned about lead in your water, you may wish to have your water tested. Information on lead in drinking water, testing methods, and steps you can take to minimize exposure is available from the Safe Drinking Water Hotline (1-800-426-4791) or at <http://www.epa.gov/lead>.

### TERMS USED IN THIS REPORT

**Maximum Contaminant Level (MCL):** The highest level of a contaminant that is allowed in drinking water. Primary MCLs are set as close to the PHGs (or MCLGs) as is economically and technologically feasible. Secondary MCLs are set to protect the odor, taste, and appearance of drinking water.

**Maximum Contaminant Level Goal (MCLG):** The level of a contaminant in drinking water below which there is no known or expected risk to health. MCLGs are set by the U.S. Environmental Protection Agency (USEPA).

**Public Health Goal (PHG):** The level of a contaminant in drinking water below which there is no known or expected risk to health. PHGs are set by the California Environmental Protection Agency.

**Maximum Residual Disinfectant Level (MRDL):** The highest level of a disinfectant allowed in drinking water. There is convincing evidence that addition of a disinfectant is necessary for control of microbial contaminants.

**Maximum Residual Disinfectant Level Goal (MRDLG):** The level of a drinking water disinfectant below which there is no known or expected risk to health. MRDLGs do not reflect the benefits of the use of disinfectants to control microbial contaminants.

**Primary Drinking Water Standards (PDWS):** MCLs and MRDLs for contaminants that affect health along with their monitoring and reporting requirements, and water treatment requirements.

**Secondary Drinking Water Standards (SDWS):** MCLs for contaminants that affect taste, odor, or appearance of the drinking water. Contaminants with SDWSs do not affect the health at the MCL levels.

**Treatment Technique (TT):** A required process intended to reduce the level of a contaminant in drinking water.

**Regulatory Action Level (AL):** The concentration of a contaminant which, if exceeded, triggers treatment or other requirements that a water system must follow.

**Variances and Exemptions:** State Board permission to exceed an MCL or not comply with a treatment technique under certain conditions.

**Level 1 Assessment:** A Level 1 assessment is a study of the water system to identify potential problems and determine (if possible) why total coliform bacteria have been found in our water system.

**Level 2 Assessment:** A Level 2 assessment is a very detailed study of the water system to identify potential problems and determine (if possible) why an *E. coli* MCL violation has occurred and/or why total coliform bacteria have been found in our water system on multiple occasions.

**ND:** not detectable at testing limit

**ppm:** parts per million or milligrams per liter (mg/L)

**ppb:** parts per billion or micrograms per liter (µg/L)

**ppt:** parts per trillion or nanograms per liter (ng/L)

**ppq:** parts per quadrillion or picogram per liter (pg/L)

**pCi/L:** picocuries per liter (a measure of radiation)

**The City of Rio Dell** does **NOT** add additional Fluoride to the drinking water supply. Fluoride is a naturally-occurring trace element in groundwater and at low levels helps prevent dental cavities. The U.S. Public Health Service considers optimal levels of fluoride to be 0.7 to 1.2 ppm for drinking water. The City's average fluoride level of 0.15 ppm is considered to be lower than optimal for helping prevent tooth decay. You may want to consider consulting your dentist about ways to prevent tooth decay.

**The sources of drinking water** (both tap water and bottled water) include rivers, lakes, streams, ponds, reservoirs, springs, and wells. As water travels over the surface of the land or through the ground, it dissolves naturally-occurring minerals and, in some cases, radioactive material, and can pick up substances resulting from the presence of animals or from human activity.

**Contaminants that may be present in source water include:**

- *Microbial contaminants*, such as viruses and bacteria, that may come from sewage treatment plants, septic systems, agricultural livestock operations, and wildlife.
- *Inorganic contaminants*, such as salts and metals, that can be naturally-occurring or result from urban storm water runoff, industrial or domestic wastewater discharges, oil and gas production, mining, or farming.
- *Pesticides and herbicides*, that may come from a variety of sources such as agriculture, urban storm water runoff, and residential uses.
- *Organic chemical contaminants*, including synthetic and volatile organic chemicals, that are by-products of industrial processes and petroleum production, and can also come from gas stations, urban storm water runoff, agricultural application, and septic systems.
- *Radioactive contaminants*, that can be naturally-occurring or be the result of oil and gas production and mining activities.

**In order to ensure that tap water is safe to drink**, the USEPA and the State Water Resources Control Board (State Board) prescribe regulations that limit the amount of certain contaminants in water provided by public water systems. State Board regulations also establish limits for contaminants in bottled water that provide the same protection for public health.

**Tables 1, 2, 3, 4, 5, and 6 list all of the drinking water contaminants that were detected during the most recent sampling for the constituent.** The presence of these contaminants in the water does not necessarily indicate that the water poses a health risk. The State Board allows us to monitor for certain contaminants less than once per year because the concentrations of these contaminants do not change frequently. Some of the data, though representative of the water quality, are more than one year old. Any violation of an AL, MCL, MRDL, or TT is asterisked. Additional information regarding the violation is provided later in this report.

**TABLE 1 – SAMPLING RESULTS SHOWING THE DETECTION OF COLIFORM BACTERIA**

<b>Microbiological Contaminants</b> (complete if bacteria detected)	<b>Highest No. of Detections</b>	<b>No. of months in violation</b>	<b>MCL</b>	<b>MCLG</b>	<b>Typical Source of Bacteria</b>
Total Coliform Bacteria (state Total Coliform Rule)	0	0	1 positive monthly sample	0	Naturally present in the environment
Fecal Coliform or <i>E. coli</i> (state Total Coliform Rule)	0	0	A routine sample and a repeat sample are total coliform positive, and one of these is also fecal coliform or <i>E. coli</i> positive		Human and animal fecal waste
<i>E. coli</i> (federal Revised Total Coliform Rule)	0	0	(a)	0	Human and animal fecal waste
(a) Routine and repeat samples are total coliform-positive and either is <i>E. coli</i> -positive or system fails to take repeat samples following <i>E. coli</i> -positive routine sample or system fails to analyze total coliform-positive repeat sample for <i>E. coli</i> .					

**TABLE 2 – SAMPLING RESULTS SHOWING THE DETECTION OF LEAD AND COPPER**

Lead and Copper	Sample Date	No. of samples collected	90 <sup>th</sup> percentile level detected	No. sites exceeding AL	AL	PHG	Typical Source of Contaminant
Lead (ppb)	9/17/2020	10	4.3	0	15	0.2	Internal corrosion of household water plumbing systems; discharges from industrial manufacturers; erosion of natural deposits
Copper (ppm)	9/17/2020	10	.09	0	1.3	0.3	Internal corrosion of household plumbing systems; erosion of natural deposits; leaching from wood preservatives

**TABLE 3 - SAMPLING RESULTS FOR SODIUM AND HARDNESS**

Chemical or Constituent (and reporting units)	Sample Date	Level Detected	Range of Detections	MCL	PHG (MCLG)	Typical Source of Contaminant
Sodium (ppm)	2015	8.2	4.4-8.5	none	none	Salt present in the water and is generally naturally occurring
Hardness (ppm)	2015	150	70-150	none	none	Sum of polyvalent cations present in the water, generally magnesium and calcium, and are usually naturally occurring

**SODIUM:**

We recognize that the addition of sodium to drinking water may be of concern to some customers. In 2015, after treatment, the water contains approximately 8.2 ppm of sodium. The U.S. EPA considers servings of less than 35 ppm to be very low sodium. The Food and Drug Administration states that most American adults tend to eat between 4,000 and 6,000 ppm of sodium per day. There is currently no drinking water standard for sodium.

**HARDNESS:**

Water in the City of Rio Dell is considered to be fairly hard at an average detected level of 150 ppm. Water that is too soft, below 30 ppm, can be corrosive to plumbing pipes and water that is too hard, above 300 ppm, causes scaled to form on plumbing fixtures and cooking utensils.

**TABLE 4 - DETECTION OF CONTAMINANTS WITH A PRIMARY DRINKING WATER STANDARD**

Chemical or Constituent (and reporting units)	Sample Date	Level Detected	Range of Detections	MCL [MRDL]	PHG (MCLG) [MRDLG]	Typical Source of Contaminant
All required contaminants tested for were Non-Detected	2015	ND	ND	-	-	
Radioactive Contaminants	Sample Date	Level Detected	Range of Detections	MCL [MRDL]	PHG (MCLG) [MRDLG]	Typical Source of Contaminant
Gross Alpha Particle Activity (pCi/L)	2018	.170	.170	15	(0)	Erosion of natural deposits

**TABLE 5 - DETECTION OF CONTAMINANTS WITH A SECONDARY DRINKING WATER STANDARD**

Chemical or Constituent (and reporting units)	Sample Date	Level Detected	Range of Detections	MCL	PHG (MCLG)	Typical Source of Contaminant
Chloride (ppm)	2015	6.9	6.9	500	N/A	Runoff/leaching from natural deposits; seawater influence
Color	2015	4	4	15	N/A	Naturally-occurring organic materials
Foaming Agents (MBAS) ppm	2015	<50	<50	500	N/A	Municipal and industrial waste discharges
Manganese (ppb)	2021	430	19 - 430	50	N/A	Leaching from natural deposits.
Specific Conductance (µS/cm)	2020	280	280	1600	N/A	Substances that form ions when in water; seawater influence
Sulfate (ppm)	2015	17	17	500	N/A	Runoff/leaching from natural deposits; industrial wastes
Total Dissolved Solids (TDS) (ppm)	2015	170	170	1000	N/A	Runoff/leaching from natural deposits
Turbidity (NTU)	2015	.21	.21	5	N/A	Soil Runoff

**TABLE 6 – DISINFECTANT BYPRODUCTS**

Chemical or Constituent (and reporting units)	Sample Date	Average Level Detected	Notification Level	Health Effects Language
Total Trihalomethanes TTHM (ppb)	8/24/2021	37	80	Some people who drink water containing trihalomethanes in excess of the MCL over many years may experience liver, kidney, or central nervous system problems, and may have an increased risk of getting cancer.
Haloacetic Acids (ppb)	8/24/2021	9.9	60	Some people who drink water containing Haloacetic acids in excess of the MCL over many years may have an increased risk of getting cancer.
Chlorine CL2 (ppb)	11/13/2021	1.65	4.0	Some people who use water containing chlorine well in excess of the MRDL could experience irritating effects to their eyes and nose. Some people who drink water containing chlorine well in excess of the MRDL could experience stomach discomfort.

**TABLE 7 - SAMPLING RESULTS SHOWING TREATMENT OF SURFACE WATER SOURCES**

<i>Treatment Technique</i> <sup>(a)</sup> (Type of approved filtration technology used)	
Turbidity Performance Standards <sup>(b)</sup> (that must be met through the water treatment process)	<u>Turbidity of the filtered water must:</u> 1 – Be less than or equal to 0.2 NTU in 95% of measurements in a month. 2 – Not exceed 0.34 NTU at any time.
Lowest monthly percentage of samples that met Turbidity Performance Standard No. 1.	100%
Highest single turbidity measurement during the year	.11 ntu
Number of violations of any surface water treatment requirements	0

\* Any violation of a TT is marked with an asterisk. Additional information regarding the violation is provided earlier in this report.

(a) A required process intended to reduce the level of a contaminant in drinking water.

(b) Turbidity (measured in NTU) is a measurement of the cloudiness of water and is a good indicator of water quality and filtration performance. Turbidity results which meet performance standards are considered to be in compliance with filtration requirements.

## **Water and Sewer Rates**

Effective 07/01/2022



### **COST OF CITY WATER**

1 UNIT OF WATER = 100 CUBIC=748 GALLONS

BASE RATE = \$45.47

UNIT CHARGE = \$3.33

DINSMORE ZONE CHARGE = \$67.63

### **CITY SEWER COST**

FIXED CHARGE \$54.28

NEW CUSTOMER \$80.18

LOW FLOW @ \$4.15 PER UNIT

DOMESTIC FLOW @ \$5.18 PER UNIT

MEDIUM FLOW @ \$7.73 PER UNIT

HIGH FLOW @ \$9.01 PER UNIT

The Water Meters are read at the end of each month and utility bills are sent out shortly thereafter.

Utility bills are due by 3:00 pm on the 26<sup>th</sup> of the following month. After 3:00 pm on the 26<sup>th</sup> a late fee of 10% will be applied to your next utility bill.

After the 10<sup>th</sup> of the following month, a courtesy notice is mailed out to delinquent accounts. Final notices are sent out when residential accounts become 60 days delinquent. If the previous balance (stated on your billing statement) has not been paid by the specified date on the final notice, then service will be discontinued.

Once the service has been discontinued, the full amount, plus a delinquency fee is required before water service is restored. The delinquency fee is \$50.

### **Ways to pay your bill**

- Online through the City's website.
- In Person at City Hall: Monday-Friday 9:00 AM- 4:30 PM.
- Phone: (707) 764-3532 Monday-Friday 8:00 AM- 4:45 PM.
- By Mail: City of Rio Dell, 675 Wildwood Ave, Rio Dell, CA 95562.
- Via Dropbox: located at City Hall in the northeast corner the parking lot and next to the front door.

\*Please note that all credit card transactions will have an additional third-party service fee.

For an afterhours water or sewer emergency please call the non-emergency police department line 707-764-5641. A \$75 fee may be assessed for an after-hours call out.

Please note that the water meter itself is city property and you may be fined \$400 for tampering with the meter (this includes but is not limited to turning off the water at the meter).

All dwellings in Rio Dell should have a shut-off valve on the customer's property per Municipal Code 13.05.060. We encourage you to know where your shut-off is located in case of water emergencies such as a broken pipe.

If you have any questions or have not received your bill by the 10<sup>th</sup> of the month please contact City Hall.

# SAVE OUR WATER

Since water is a limited resource and it is important to each of us every day, water conservation is essential. By following these water conservation tips you can help conserve water every day.

## INSIDE THE HOME

### Kitchen

- » Wash vegetables in a container, not under running water.
- » Use dishwasher for full loads only.
- » Washing dishes by hand uses more water than a dishwasher. Save up to 24 gallons of water per load by using a dishwasher.

### Laundry Room

- » Use washing machine for full loads only. You can save 15–45 gallons per load.
- » Check with your local water agency for any current rebate.

### Bathroom

- » Install low-flow shower heads.
- » Take shorter showers. (Showers kept under 5 minutes can save you about 12.5 gallons per shower.)
- » If you take a bath, fill bathtub less than halfway. (You can save 17–25 gallons per bath.)
- » Install a high efficiency (HET) toilet. You can save 6–35 gallons per day. (Check with your local water agency for current rebate.)
- » Install aerators on bathroom faucets. (Most homes built after 1980 already have these features.)
- » Turn water off when brushing teeth, washing hands or shaving.

## OUTSIDE THE HOME

### Landscape

- » Water in the morning when it is cooler and use a layer of mulch to help retain soil moisture.
- » Check your sprinkler system frequently and adjust sprinklers so only your lawn is watered and not the house, sidewalk, or street.
- » Choose water-efficient irrigation systems such as drip irrigation for your trees, shrubs, and flowers.
- » Water deeply but less frequently to create healthier and stronger landscapes.
- » Plant drought-resistant trees and plants.

- » During extended dry weather, it is important to water your trees. How much water depends on the age of the tree. For tips and additional information visit [www.californiareleaf.org](http://www.californiareleaf.org)

### Clean-up

- » Use a broom to clean driveways, sidewalks, patios and walkways.
- » Wash cars with a bucket, sponge, and hose with self-closing nozzle.

## TIPS ON LEAKS

*Lots of water can be lost by little leaks. A small drip can waste 70 gallons of water in a day and more than 1,000 gallons a day can pour through a steady leak of one-sixteenth inch in size. Fix leaky faucets and toilets right away. When hot water is dripping, energy is also being wasted. Since a leak can be a major water waster, always fix any leak as soon as possible.*

### PIPE LEAKS

*To detect unseen leaks, read your water meter. Don't run any water for one hour, then read your water meter again. If the meter has moved, you may have a leak.*

### FAUCET LEAKS

*Most leaks, besides toilet leaks, are in the faucets, and most are mainly due to worn washers. Listen for running water when plumbing fixtures are closed and water using appliances are off. Check your tap a couple of times a year to see if all the faucets are working properly.*

### TOILET LEAKS

*Put food coloring in your toilet tank and wait for 20 minutes. If it seeps into the toilet bowl, you have a leak. Many toilet leaks can be fixed with simple tools and a do-it-yourself manual.*

For more water saving tips and ideas, visit:



SCAN ME





California Department of  
Community Services & Development

### What is LIHWAP?

**LIHWAP** stands for the **Low Income Household Water Assistance Program**.

**LIHWAP** offers a **one-time payment** to help you pay your **past due water or wastewater bills**.

**LIHWAP** helps **pay overdue bills** which accrued during **any timeframe**. There is no date restriction for when the overdue amount occurred.

### How Do I Apply?

Households can apply for LIHWAP assistance through a local LIHWAP service provider. Eligibility for LIHWAP services can vary depending on income, water system participation, place of residence, and other factors. Households whose utility payments are included in their rent may also be eligible for LIHWAP. Contact your local LIHWAP service provider.

### What Can I Qualify For?

LIHWAP provides one-time payments to low-income households that are eligible for assistance. The size of a benefit can vary depending on the past due balance of the household's residential water and wastewater bills. In addition, program participation is limited to households receiving services from water and wastewater providers enrolled in LIHWAP to receive the payment of assistance benefits. **Households that qualify for LIHWAP could reduce their water or wastewater charges, or both if their bills include both services, by up to \$2,000.**

If you are struggling to afford your water or wastewater bills, please visit [csd.ca.gov/waterbill](http://csd.ca.gov/waterbill) to see if you qualify for payment assistance through LIHWAP and to find the local service provider near you to apply.

### Water Utility Assistance Provider

#### Redwood Community Action Agency

This provider offers residential water and wastewater utility payment assistance to low-income Californians in our area.

539 T Street, Eureka, CA 95501

Phone: (707) 444-3834

Website: <http://rcaa.org/energy-services>

Monday through Thursday: 8:30 a.m. to 12:00 p.m. & 1:00 p.m. to 5:00 p.m.



Basic Law Enforcement Academy: [police-academy@redwoods.edu](mailto:police-academy@redwoods.edu) 707-476-4334 [www.redwoods.edu/AJ](http://www.redwoods.edu/AJ)

## Please Remove Tall Grass and Vegetation

This summer is looking to be another bad fire season. Late season rains have led to an increase in ground vegetation that will dry out over the coming weeks and create an added and unnecessary threat to the community. It is vitally important that residents clear their property of tall flammable vegetation early in the season to reduce this threat. Please do the right thing and take action as soon as possible to avoid the risk, liability and potential fines associated with overgrown vegetation.



## Unsolved Cases – Please Help

Anyone with information to share about these cases should contact the Sheriff's Office Crime Tip line at (707) 268-2539 or email [hsotipline@co.humboldt.ca.us](mailto:hsotipline@co.humboldt.ca.us).



**Name:** Sandra Kay Albiani

**Case Number:** 199703626

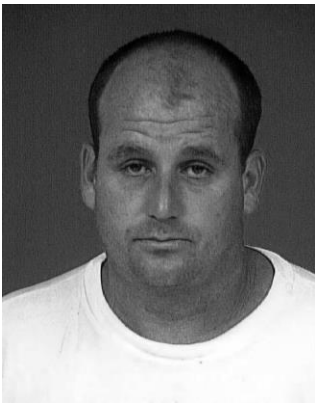
**Race:** White

**Sex:** Female

**DOB:** 5/4/1952

**City of Residency:** Scotia, CA

**Synopsis:** Sandra Albiani was working as a security guard at the Pacific Lumber Company on June 9, 1997 when she went missing during her shift, sometime in the early morning hours. Albiani's body was discovered later that afternoon buried on the property.



**Name:** Bradley Milan Thompson

**Case Number:** 200501271

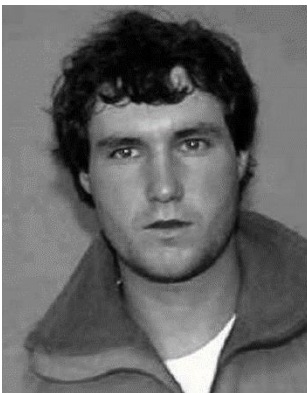
**Race:** White

**Sex:** Male

**DOB:** 9/24/1960

**City of Residency:** Myers Flat, CA

**Synopsis:** Bradley Thompson was reported missing on March 1, 2005. On November 6, 2008, Sheriff's deputies were dispatched to a gravel quarry in Scotia for the report of skeletal remains located at the site. Deputies recovered the remains and through DNA analysis determined that the remains belonged to Thompson.



**Name:** Eric Scott Day

**Case Number:** 199702426

**Race:** White

**Sex:** Male

**DOB:** 7/13/1971

**City of Residency:** Scotia, CA

**Synopsis:** Eric Day was last seen in Rio Dell on/around February 17, 1997. Day reportedly had a broken leg and was using crutches prior to his disappearance. Day reportedly had acquaintances in the Stafford area and may have been in the Southern Humboldt area in the days surrounding his disappearance.