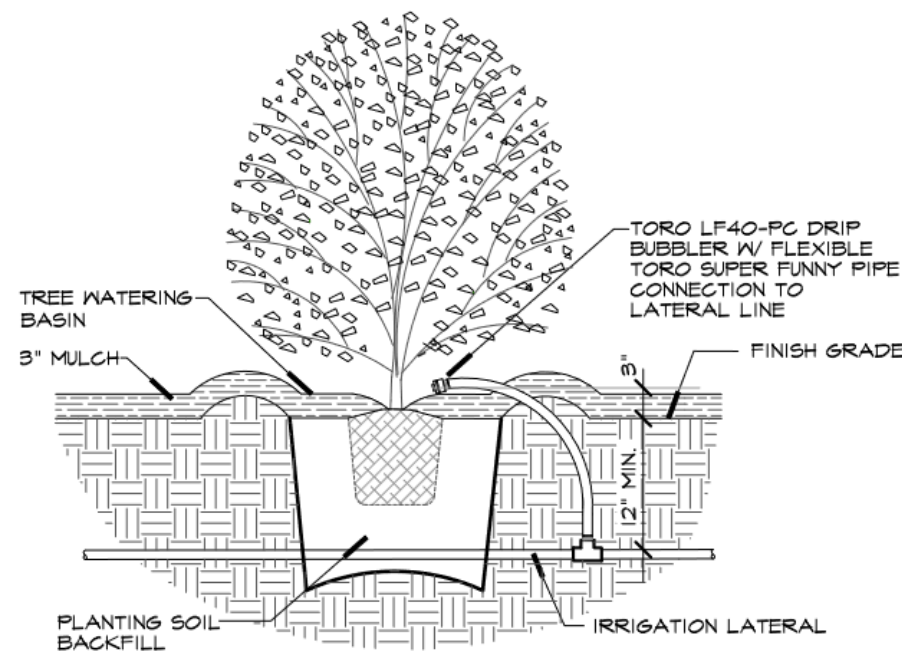
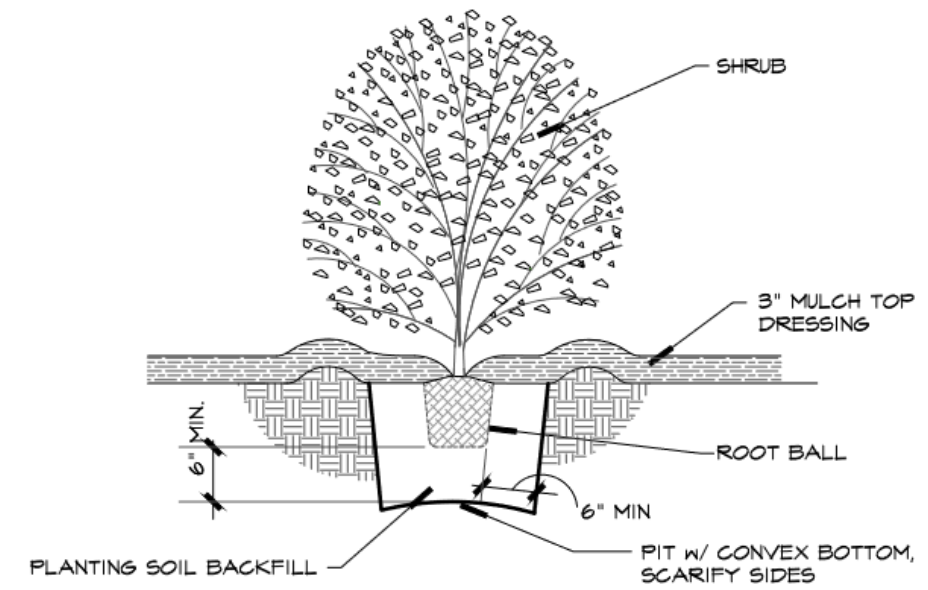


NOTES

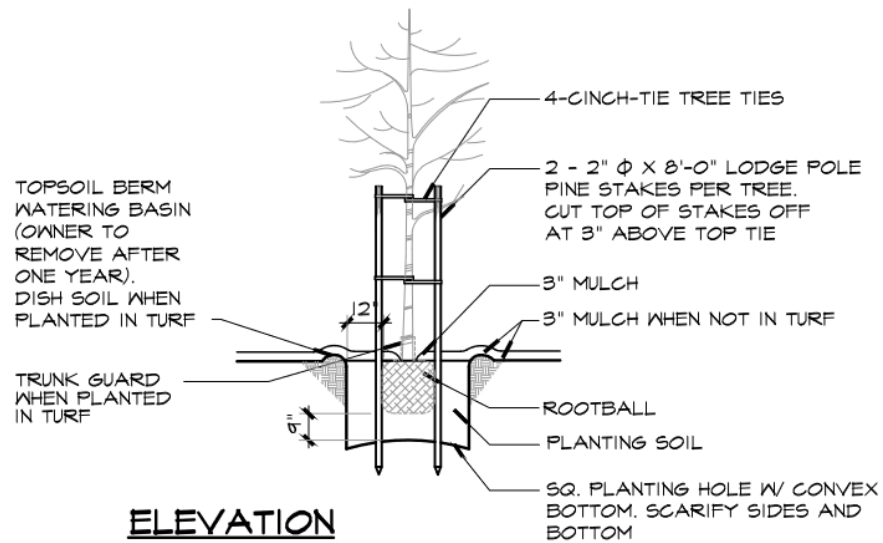
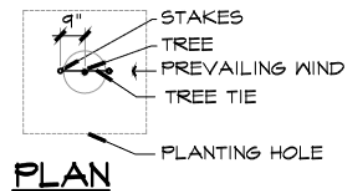
- 1. QUALITY:** PROVIDE TREES AND SHRUBS OF SIZE, GENUS, SPECIES AND VARIETY SHOWN ON PLANS AND COMPLYING RECOMMENDATIONS AND REQUIREMENTS OF ANSI Z60.1 "AMERICAN STANDARD FOR NURSERY STOCK.
- 2. TOPSOIL:** PROVIDE NEW TOPSOIL, AS REQUIRED, THAT IS FERTILE, FRIABLE, NATURAL LOAM, SURFACE SOIL, REASONABLY FREE OF SUBSOIL, CLAY LUMPS, BRUSH, WEEDS AND OTHER LITTER AND FREE OF ROOTS, STUMPS, STONES LARGER THAN 1" IN ANY DIMENSION, AND OTHER EXTRANEIOUS OR TOXIC MATTER HARMFUL TO PLANT GROWTH.
- 3. MULCH:** 3" MINIMUM ORGANIC MULCH FREE FROM DELETERIOUS MATERIALS AND SUITABLE FOR TOP DRESSING ON ALL AREAS NOT TURF OR HARDSCAPE CONSISTING OF REDWOOD GORILLA HAIR OR SHREDDED REDWOOD MULCH.
- 4. PLANTING SOIL MIXTURE:** BACKFILL FOR TREES AND SHRUBS SHALL CONSIST OF THE FOLLOWING MATERIALS AND QUANTITIES: 1 PARTS SCREENED TOPSOIL, SCREEN PASSING NOT LARGER THAN 1" IN ANY DIRECTION. 3 PARTS OF CLEAN ORGANIC COMPOST. CONTROLLED RELEASE FERTILIZER 20-10-10. MIX THOROUGHLY.



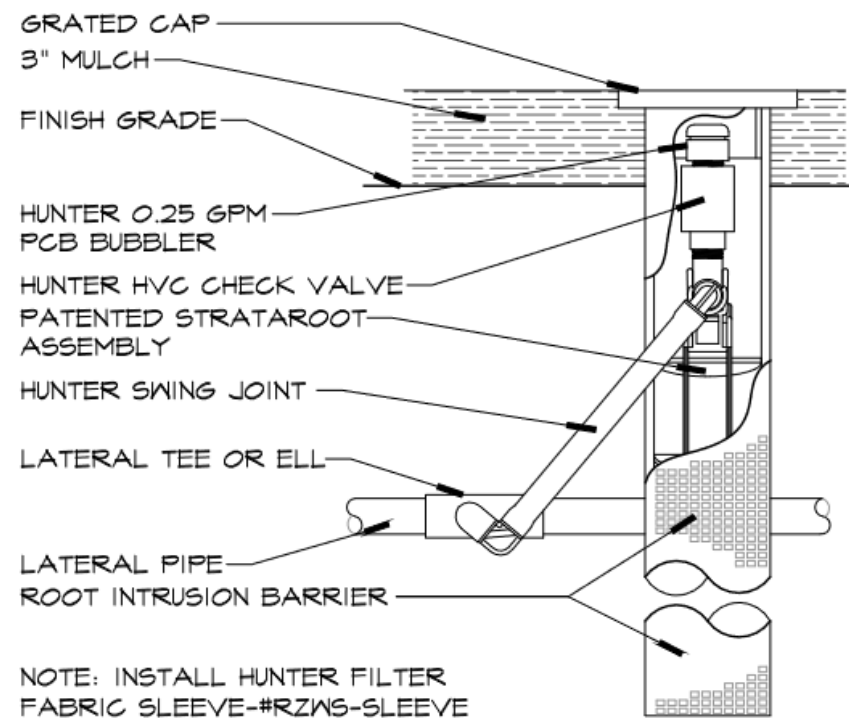
SHRUB BUBBLER



SHRUB PLANTING

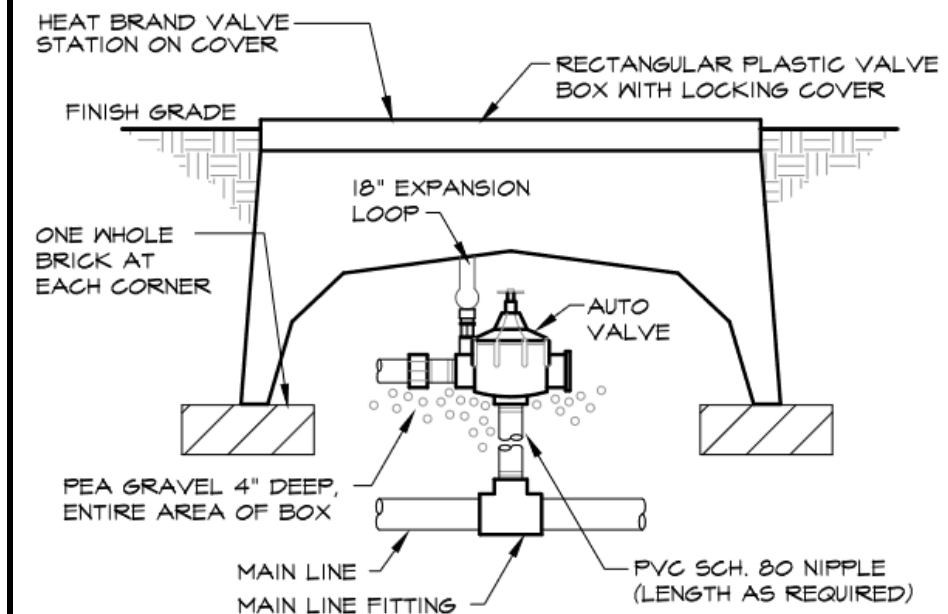


TREE PLANTING



NOTE: INSTALL HUNTER FILTER FABRIC SLEEVE-#RZWS-SLEEVE

TREE WATERING IRRIGATION



IRRIGATION VALVE



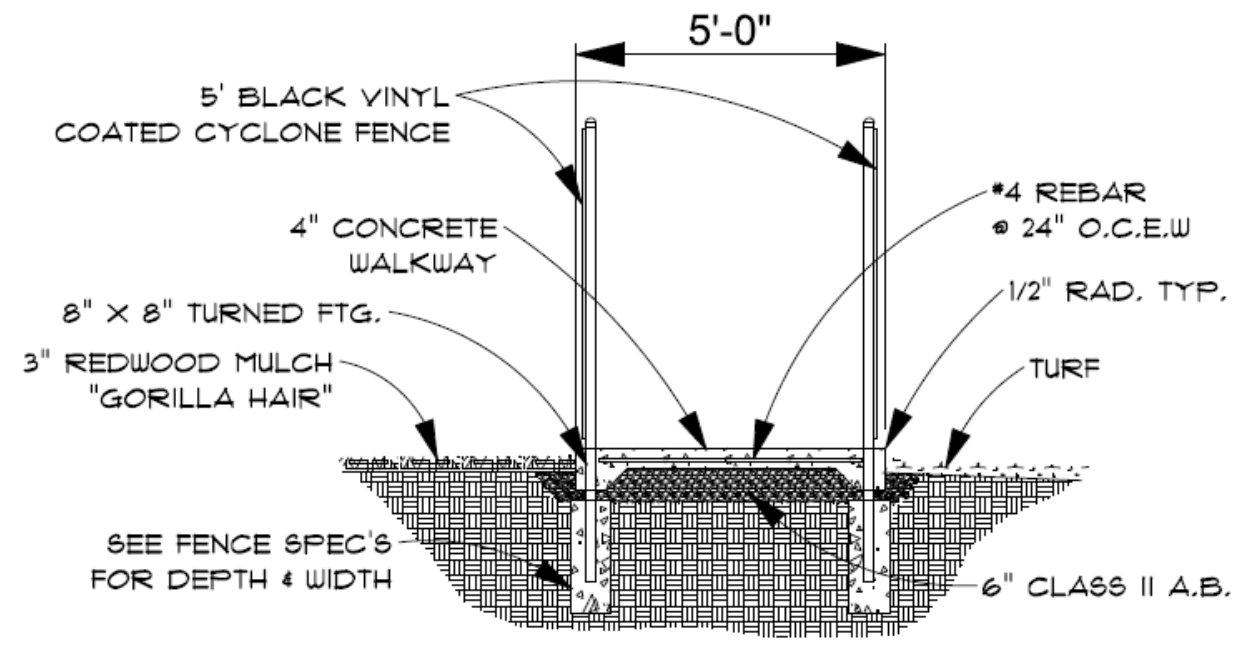
CITY OF RIO DELL DOG PARK
210 CENTER STREET
RIO DELL, CA. 95562

LANDSCAPING/IRRIGATION
DETAILS

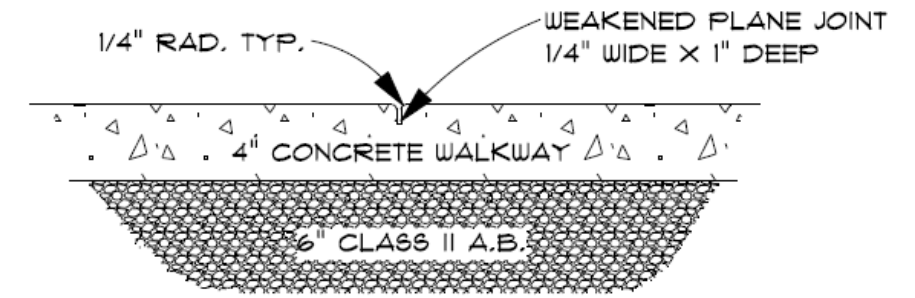
SHEET
1/4



CITY OF RIO DELL DOG PARK
 210 CENTER STREET
 RIO DELL, CA. 95562



5' SIDEWALK CROSS-SECTION



JOINTS SHALL NOT EXCEED 10' IN ANY DIRECTION

WEAKENED PLANE JOINT



HEAVENLY BAMBOO "NANDINA DOMESTICA"



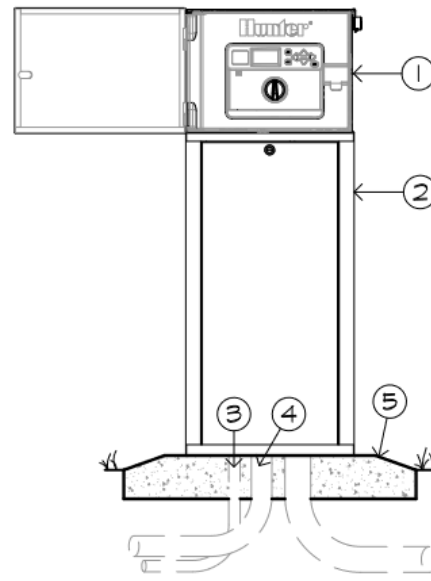
CHINESE PISTACH - KEITH DAVEY "PISTASCIA CHINESIS"



REDWOOD MULCH "GORILLA HAIR"

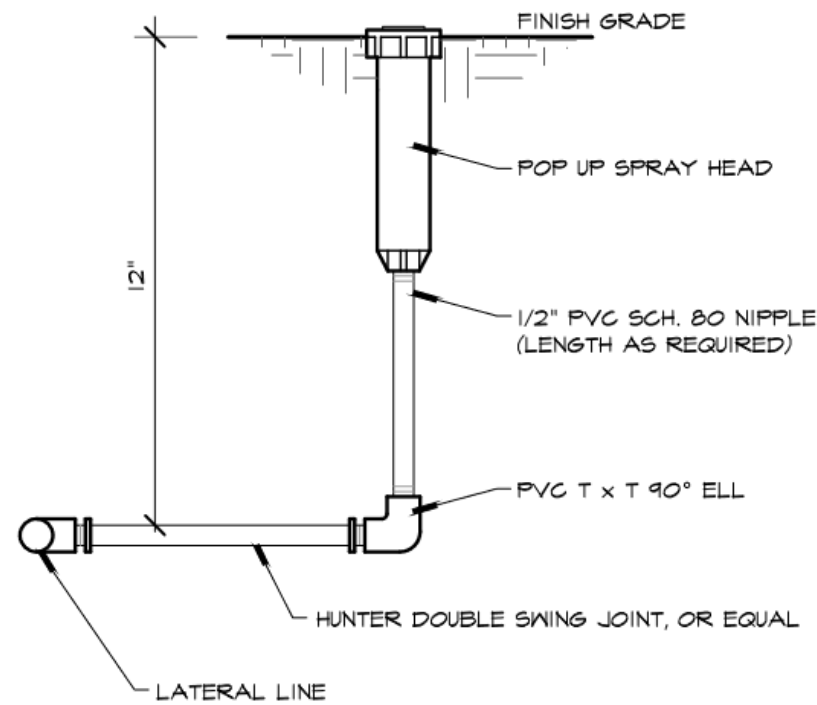
LANDSCAPING/IRRIGATION DETAILS

SHEET 2/4



- ① MODEL IC-XX00-PED
- ② ACC-PED
- ③ 3/4" POWER CONDUIT: SIZE, TYPE, DEPTH PER LOCAL CODE
- ④ GROUND WIRE CONDUIT, MIN. 1 1/2". GROUND PER ASIC GUIDELINES
- ⑤ PEDESTAL BASE: CONCRETE OR PREFABRICATED
- ⑥ FINISH GRADE
- ⑦ CONDUIT FOR CONTROL WIRES

CONTROLLER



POP-UP SPRAY HEAD

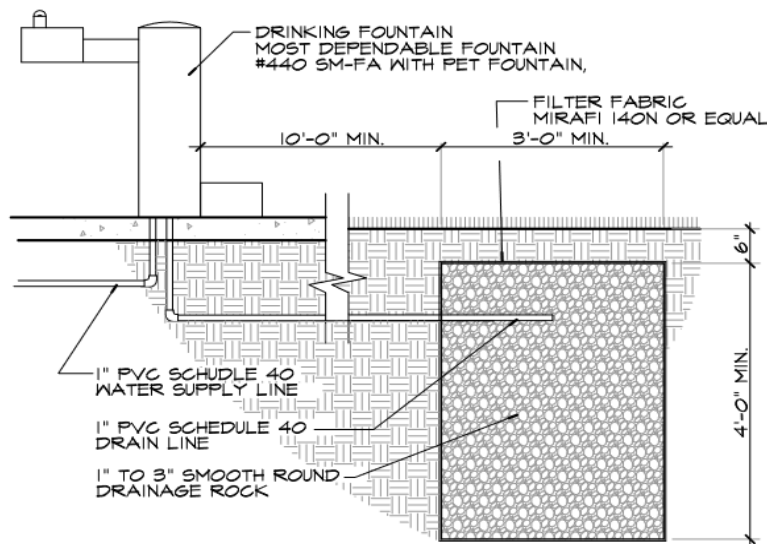
ALUMINUM DOGIPOT® PET STATION (#1003-L)

The Aluminum DOGIPOT® Pet Station sets the standard with heavy-duty commercial durability for high-traffic, dog-friendly areas.

- Available in forest green (#1003-L), black (#1003-BLK-L)
- Aluminum DOGIPOT® Pet Sign (Choice of On or Off-Leash)
- Aluminum DOGIPOT® Junior Bag Dispenser with two (2) rolls of 200 count DOGIPOT® SMART Litter Pick Up Bags™
- 10-Gallon Steel Trash Receptacle with Stainless Steel Lid (can upgrade to include the all Aluminum Trash Receptacle with Lid Item #1206A-L)
- Box of 50 count DOGIPOT® SMART Liner Trash Bags™
- 2" x 2" x 4'-8' square galvanized steel telescopic mounting post with installation hardware



DOGIPOT PET STATION



DRINKING FOUNTAIN



MOST DEPENDABLE MODEL 440-SM-FA W/PET FOUNTAIN GREEN

DRINKING FOUNTAIN



GREEN

ULTRASITE RECYCLING TRIPLE RECEPTACLE MODEL # TRSQ-60

TRASH/RECYCLING RECEPTACLES



CITY OF RIO DELL DOG PARK
210 CENTER STREET
RIO DELL, CA. 95562

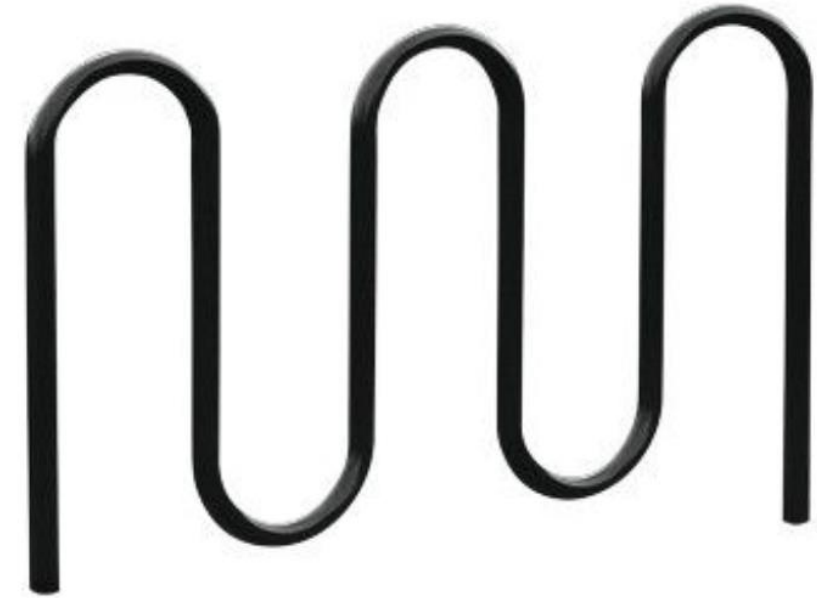
LANDSCAPING/IRRIGATION
DETAILS



HILFIKER PRE-CAST PICNIC TABLES



HILFIKER PRE-CAST BENCHES



PARK-IT POWDER-COATED STEEL BIKE RACK
MODEL NO. T2TT071-BK
IN-GROUND MOUNT

BIKE RACK



CITY OF RIO DELL DOG PARK
210 CENTER STREET
RIO DELL, CA. 95562



BISON ULTIMATE HANG TIME 6" STEEL
42"X 72" MODEL NO. PR986XLHT

BASKETBALL HOOP



DOGPOOPSIGNS.COM PART # K-0124
3M REFLECTIVE ALUMINUM (HIP)
SIGNS - 2



DOGPOOPSIGNS.COM
PART # K2-4780 & K2-4781
3M REFLECTIVE ALUMINUM (HIP)
SIGNS

LANDSCAPING/IRRIGATION
DETAILS



CITY OF RIO DELL DOG PARK
210 CENTER STREET
RIO DELL, CA. 95562

FENCE
DETAILS/SPECIFICATIONS

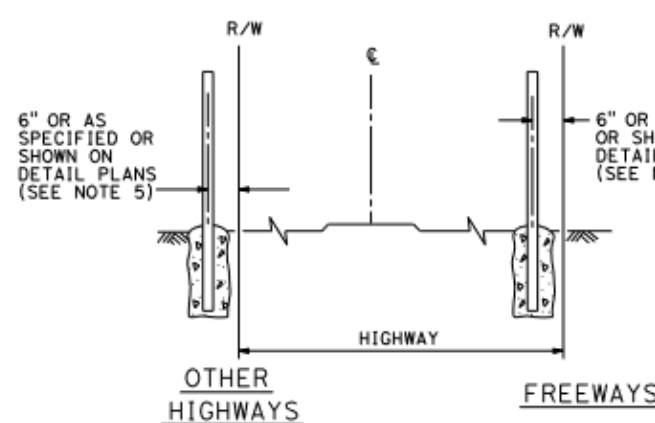
SHEET
1/2

DIST	COUNTY	ROUTE	POST MILES TOTAL PROJECT	SHEET No.	TOTAL SHEETS

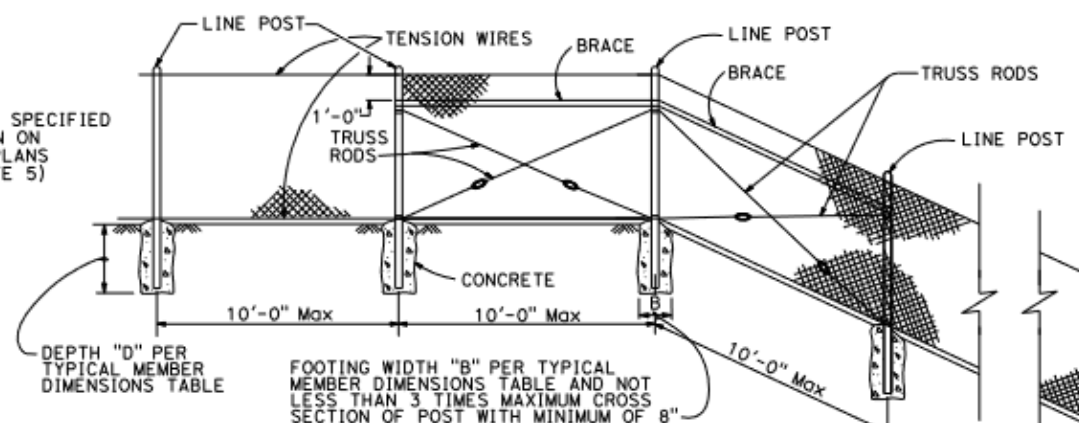
B. Valizadeh
REGISTERED CIVIL ENGINEER

May 31, 2018
PLANS APPROVAL DATE

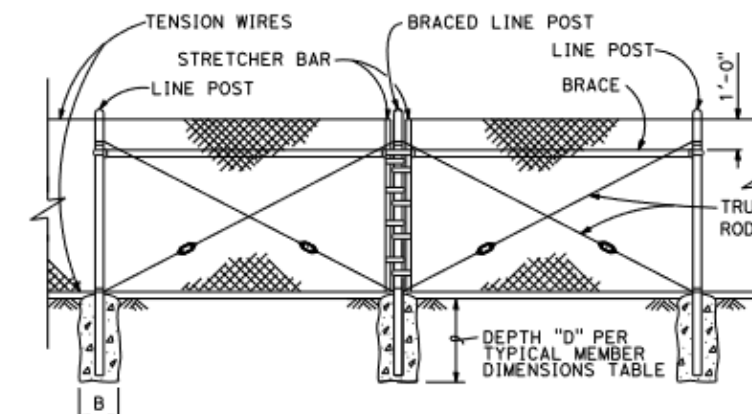
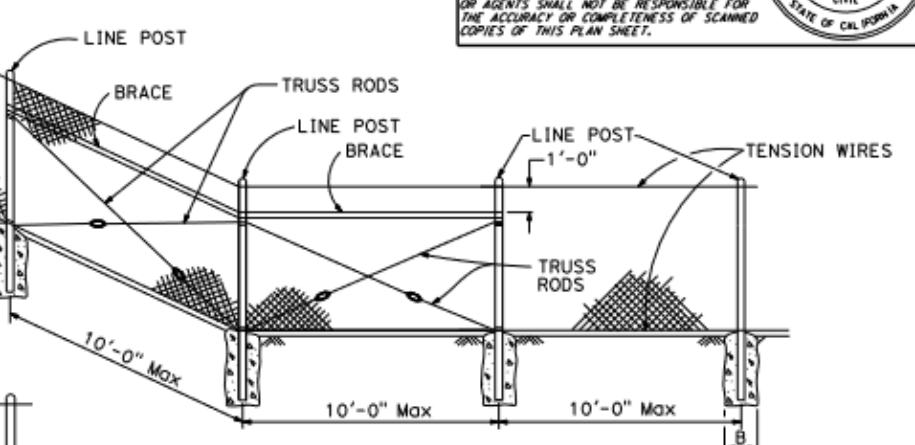
THE STATE OF CALIFORNIA OR ITS OFFICERS OR AGENTS SHALL NOT BE RESPONSIBLE FOR THE ACCURACY OR COMPLETENESS OF SCANNED COPIES OF THIS PLAN SHEET.



FENCE LOCATION

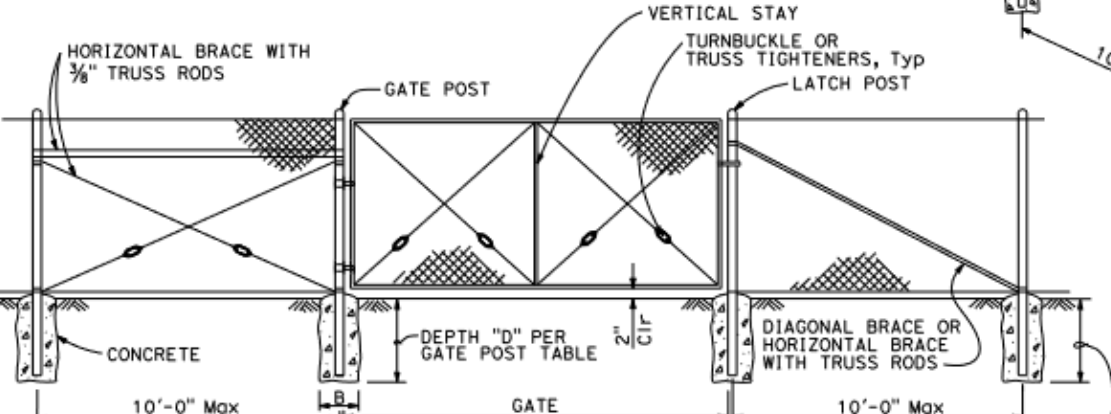


CHAIN LINK FENCE ON SHARP BREAK IN GRADE



BRACED LINE POST INSTALLATION

Braced line post at intervals not exceeding 1000'

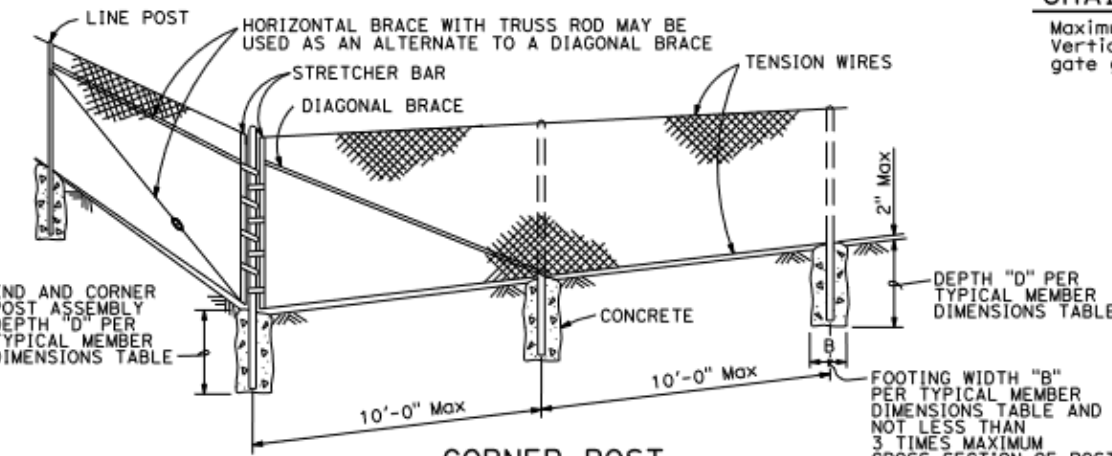


CHAIN LINK GATE INSTALLATION

Maximum Gate Width is 12'-0"
Vertical Stay is required in middle of gate greater than 8'-0" in width.

FENCE HEIGHT (Max)	SLATTED	B (in)	D (ft)	ROUND PIPE		
				SECTION	ROUND OD PIPE	WEIGHT (lb/ft)
5'-0"	NO	12"	2'-6"	3 Std	3.50"	7.58
6'-0"	NO	12"	2'-6"	3 Std	3.50"	7.58
8'-0"	NO	12"	3'-0"	3 Std	3.50"	7.58
10'-0"	NO	14"	3'-6"	3 Std	3.50"	7.58
5'-0"	YES	12"	3'-0"	3 1/2 Std	4.00"	9.12
6'-0"	YES	14"	3'-6"	4 Std	4.50"	10.80
8'-0"	YES	18"	3'-6"	5 Std	5.56"	14.60
10'-0"	YES	20"	4'-0"	6 Std	6.63"	19.00

Above post dimensions and weights are minimums. Larger sizes may be used upon approval.



CORNER POST

- NOTES:
- The table to the right shows minimum sized posts and braces complying with the specifications. Larger or heavier post and brace sizes may be used upon approval.
 - Sections shown in the tables must also comply with the strength requirements and other provisions of the Specifications.
 - Other sections which comply with the strength requirements and other provisions of the Specifications may be used upon approval.
 - Options exercised shall be uniform on any one project.
 - Offset to be 2'-0" at monument locations, measured at right angles to R/W lines. Taper to achieve offset to be at least 20'-0" long.
 - See Standard Plan A85B for Brace, Stretcher Bar, and Truss Tightener Details.

TYPICAL MEMBER DIMENSIONS (See Notes)													
FENCE HEIGHT (Max)	SLATTED	B (in)	D (ft)	LINE POSTS				BRACES					
				ROUND PIPE		ROLL FORMED		ROUND PIPE		ROLL FORMED			
				SECTION	ROUND OD PIPE	WEIGHT (lb/ft)	SECTION	WEIGHT (lb/ft)	SECTION	ROUND OD PIPE	WEIGHT (lb/ft)	SECTION	WEIGHT (lb/ft)
5'-0"	NO	8"	2'-6"	1 1/2 Std	1.90"	2.72	1.875" x 1.625"	1.85	1 1/2 Std	1.90"	2.72	1.625" x 1.250"	1.35
6'-0"	NO	10"	2'-6"	2 Std	2.38"	3.66	1.875" x 1.625"	2.40	2 Std	2.38"	3.66	1.625" x 1.250"	1.35
8'-0"	NO	12"	3'-0"	2 1/2 Std	2.88"	5.80	3.250" x 2.500"	4.50	2 Std	2.38"	3.66	1.625" x 1.250"	1.35
10'-0"	NO	14"	3'-6"	3 Std	3.50"	7.58	3.250" x 2.500"	4.50	2 1/2 Std	2.88"	5.80	1.625" x 1.250"	1.35
5'-0"	YES	12"	3'-0"	3 1/2 Std	4.00"	9.12	N/A	-	2 Std	2.38"	3.66	N/A	-
6'-0"	YES	14"	3'-0"	4 Std	4.50"	10.80	N/A	-	2 Std	2.38"	3.66	N/A	-
8'-0"	YES	18"	3'-6"	5 Std	5.56"	14.60	N/A	-	2 Std	2.38"	3.66	N/A	-
10'-0"	YES	20"	4'-0"	6 Std	6.63"	19.00	N/A	-	2 1/2 Std	2.88"	5.80	N/A	-

STATE OF CALIFORNIA
DEPARTMENT OF TRANSPORTATION
CHAIN LINK FENCE
NO SCALE

A85



CITY OF RIO DELL DOG PARK
 210 CENTER STREET
 RIO DELL, CA. 95562

FENCE
 DETAILS/SPECIFICATIONS

SHEET
 2/2

DIST	COUNTY	ROUTE	POST MILES TOTAL PROJECT	SHEET TOTAL SHEETS

B. W. [Signature]
 REGISTERED CIVIL ENGINEER

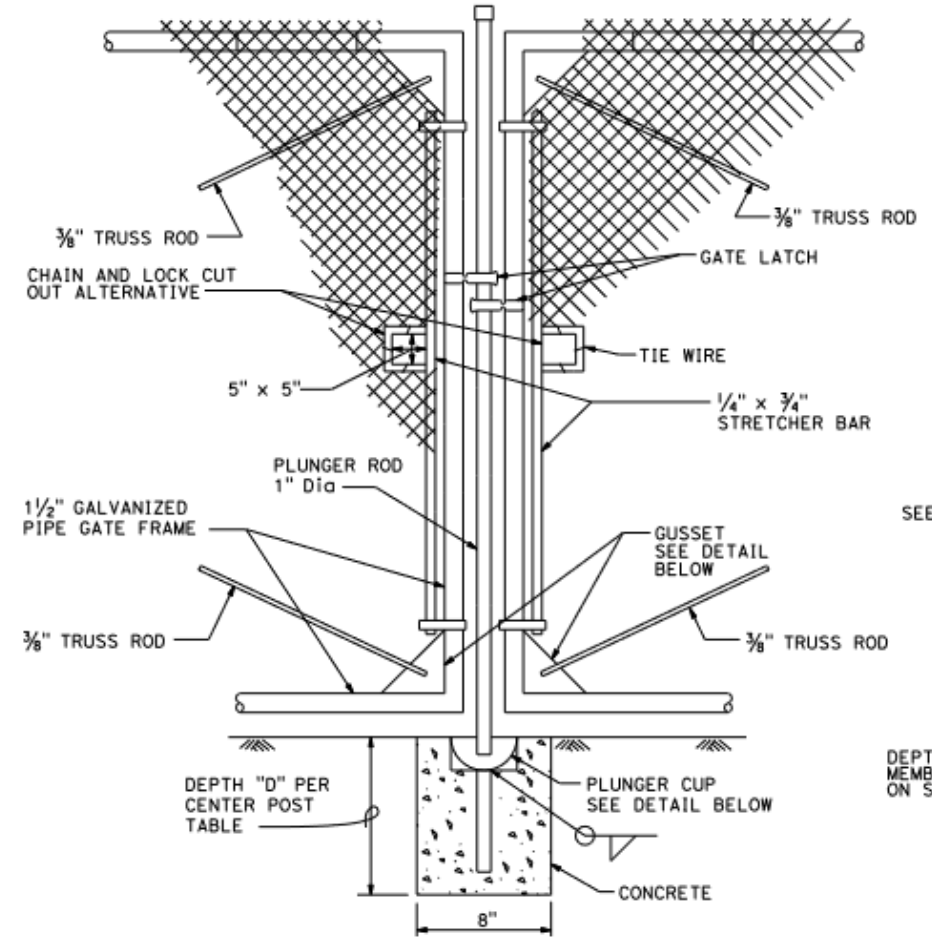
May 31, 2018
 PLANS APPROVAL DATE

THE STATE OF CALIFORNIA OR ITS OFFICERS OR AGENTS SHALL NOT BE RESPONSIBLE FOR THE ACCURACY OR COMPLETENESS OF SCANNED COPIES OF THIS PLAN SHEET.

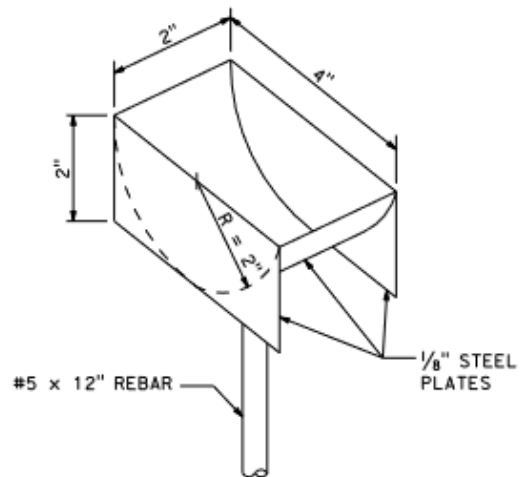
REGISTERED PROFESSIONAL ENGINEER
 N. Rezo Valizadeh
 No. CS1902
 Exp. 6-30-18
 CIVIL
 STATE OF CALIFORNIA

- NOTES:**
1. B is not less than 3 times maximum cross section of post with minimum of 8".
 2. See Standard Plan A85 for Chain Link Fencing dimensions.
 3. See Detail A on Standard Plan A86B for connection at headwall.
 4. See Detail D on Standard Plan A86B for connection at headwall.

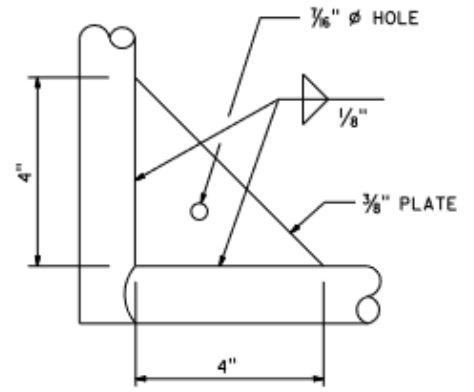
CENTER POST		
FENCE HEIGHT (Max)	SLATTED	D
ALL HEIGHTS	NO	1'-6"
5'-0"	YES	3'-0"
6'-0"	YES	3'-0"
8'-0"	YES	3'-6"
10'-0"	YES	4'-0"



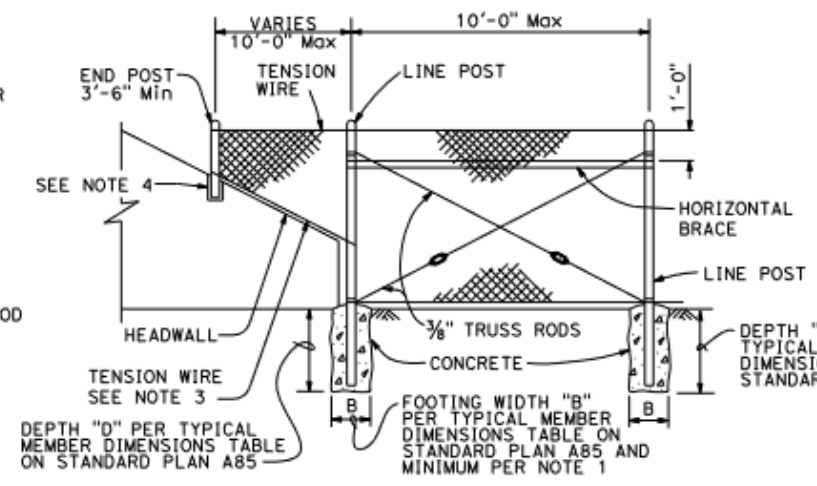
DOUBLE GATE REMOVABLE CENTER POST
 Each gate maximum width is 12'-0"



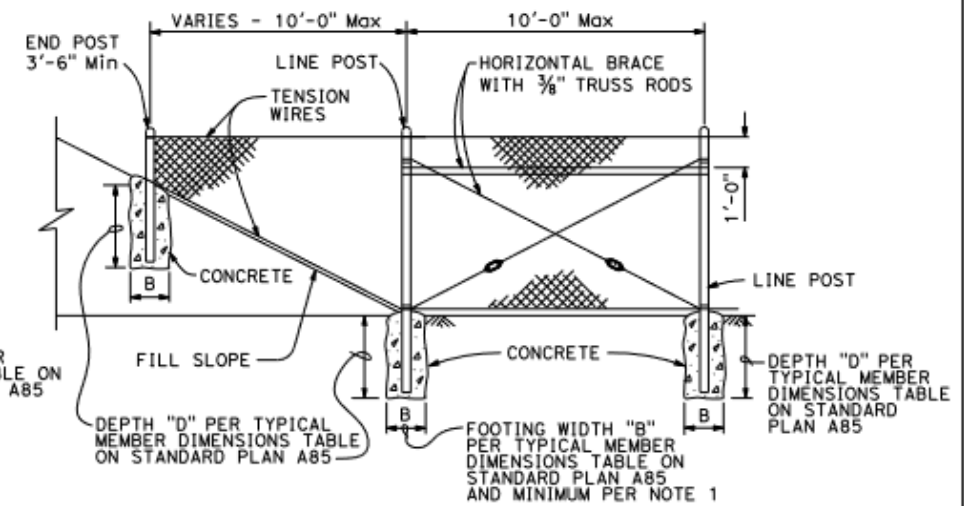
PLUNGER CUP DETAIL



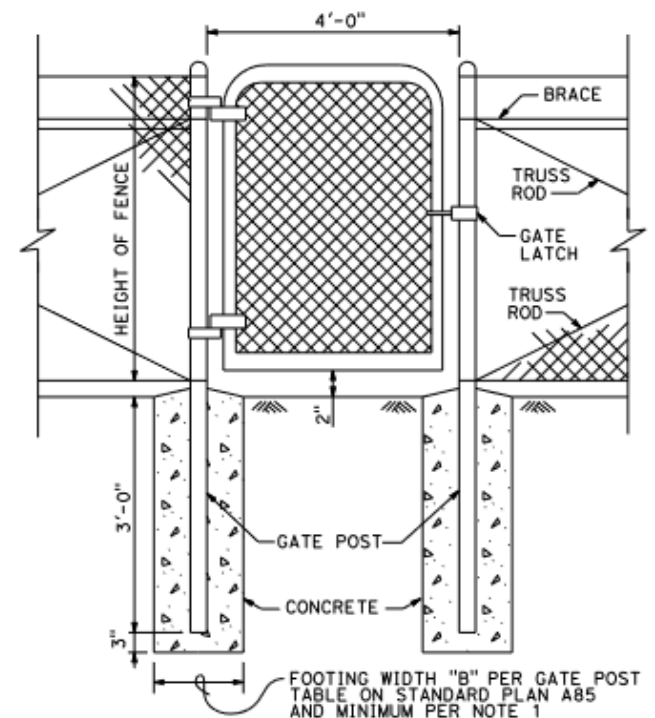
GUSSET DETAIL



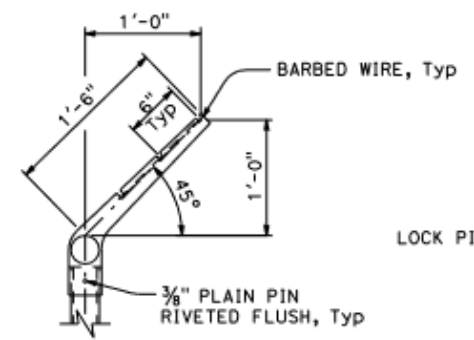
METHOD OF TYING FENCE TO HEADWALL



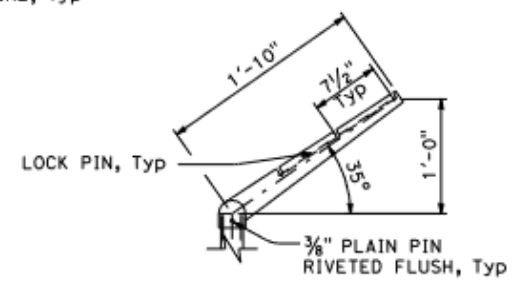
METHOD OF ERECTING FENCE FOR FILL SLOPE



WALK GATE



LINE POST



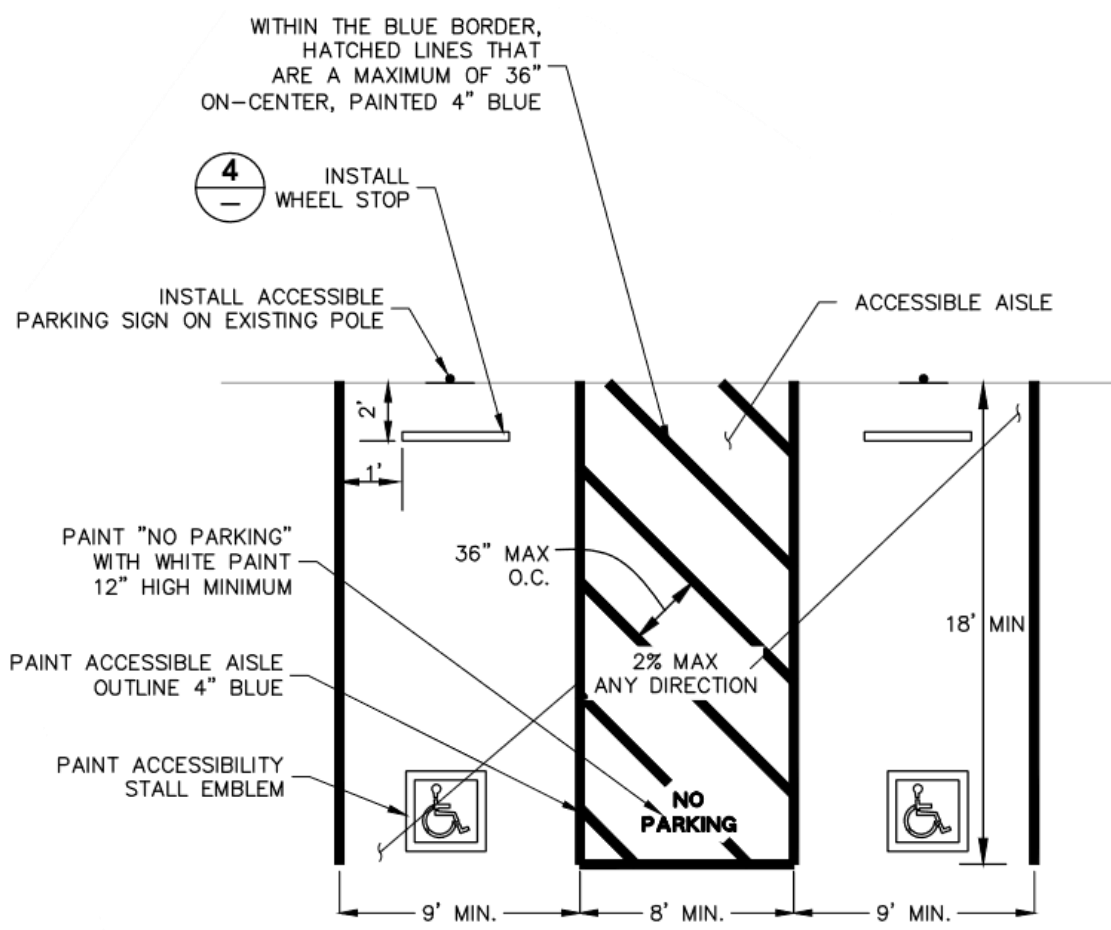
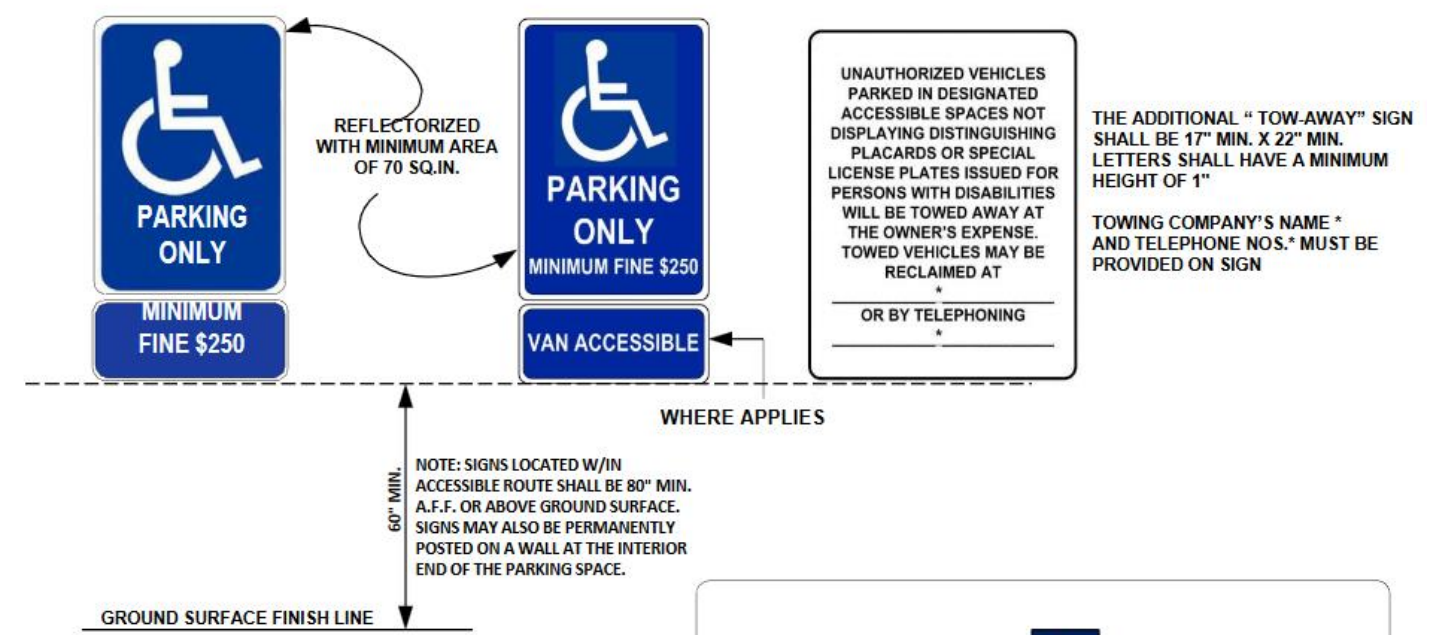
CORNER POST

BARBED WIRE POST TOP

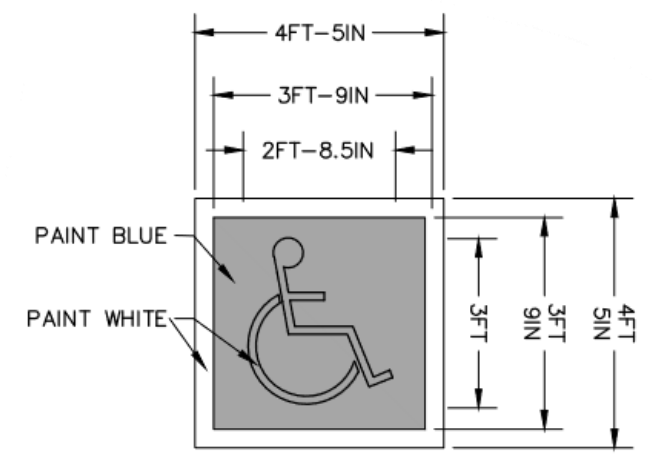
STATE OF CALIFORNIA
 DEPARTMENT OF TRANSPORTATION
CHAIN LINK FENCE DETAILS
 NO SCALE

A85A

ACCESSIBLE PARKING SIGN INSTALLED AT EACH SPACE



PERPENDICULAR ACCESSIBLE PARKING
NO SCALE



INTERNATIONAL SYMBOL OF
ACCESSIBILITY STALL EMBLEM
NTS

