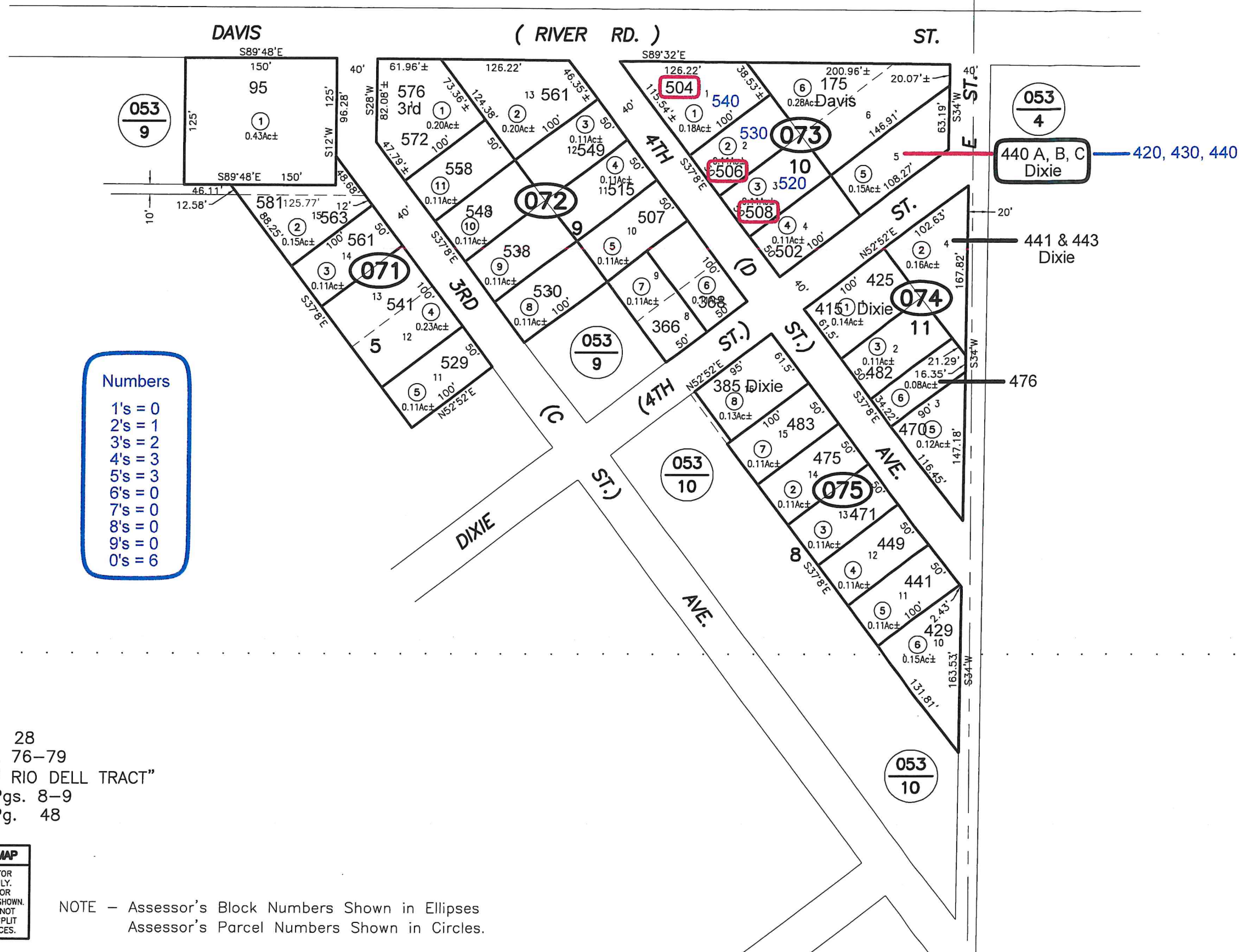


052
23

052
32



Numbers

1's = 0
2's = 1
3's = 2
4's = 3
5's = 3
6's = 0
7's = 0
8's = 0
9's = 0
0's = 6

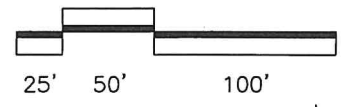
RM, Bk. 6 of MAPS, Pg. 28
RM, Bk. 11 of MAPS, Pgs. 76-79
"FIRST ADDN. TO NEW RIO DELL TRACT"
RS, Bk. 10 of SURVEYS, Pgs. 8-9
RS, Bk. 10 of SURVEYS, Pg. 48

COUNTY OF HUMBOLDT
The Home of the Redwoods

ASSESSOR'S PARCEL MAP

1. THIS MAP WAS PREPARED FOR ASSESSMENT PURPOSES ONLY.
2. NO LIABILITY IS ASSUMED FOR THE ACCURACY OF THE DATA SHOWN.
3. ASSESSOR'S PARCELS MAY NOT COMPLY WITH LOCAL LOT-SPLIT OR BUILDING SITE ORDINANCES.

NOTE - Assessor's Block Numbers Shown in Ellipses
Assessor's Parcel Numbers Shown in Circles.



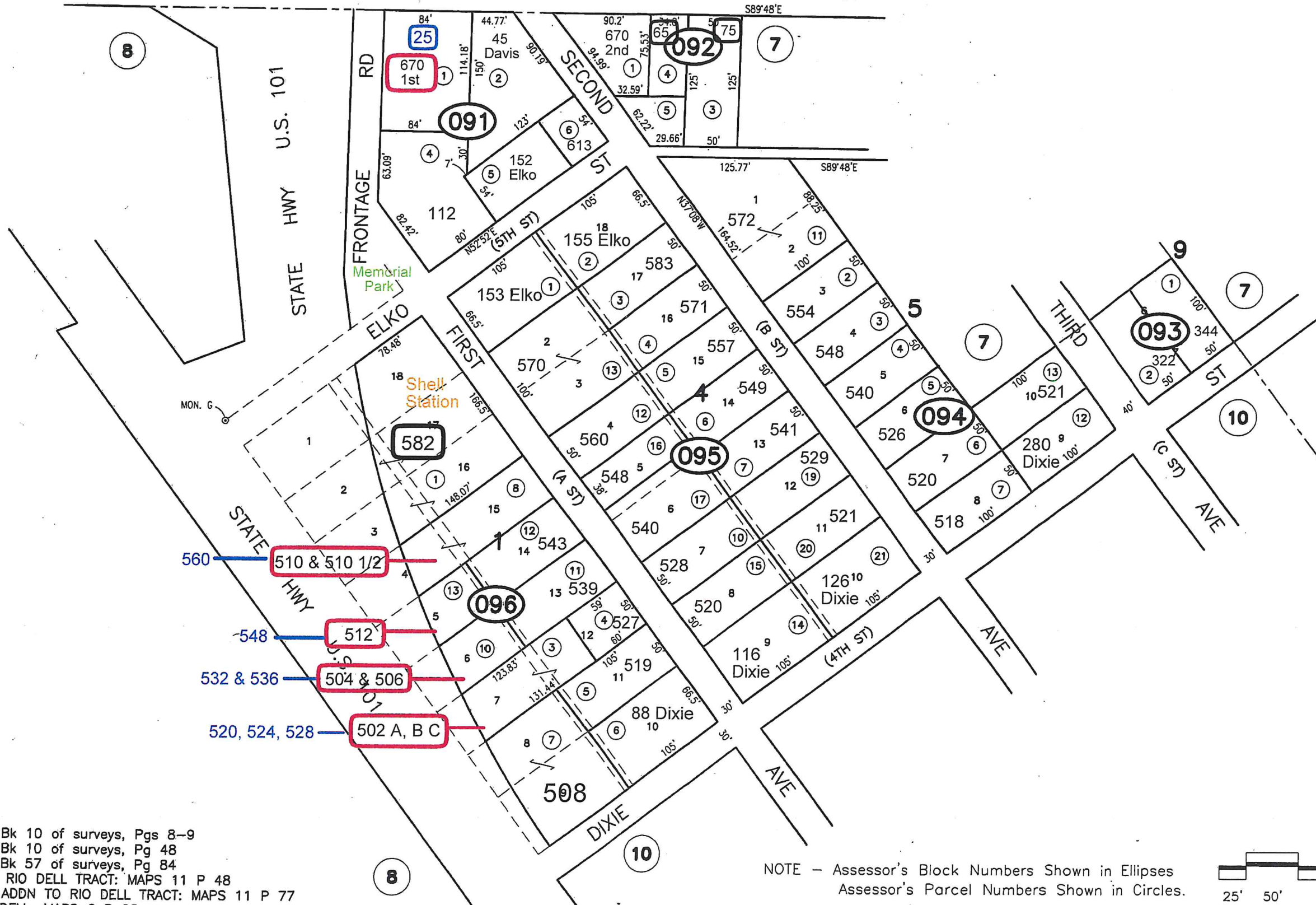
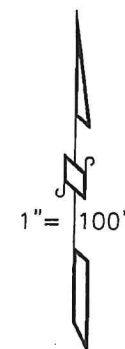
52
22

52
23

DAVIS

(RIVER RD)

ST



Numbers

1's = 0
2's = 5
3's = 2
4's = 2
5's = 8
6's = 2
7's = 0
8's = 1
9's = 0
0's = 2

- 560 — 510 & 510 1/2
- 548 — 512
- 532 & 536 — 504 & 506
- 520, 524, 528 — 502 A, B C

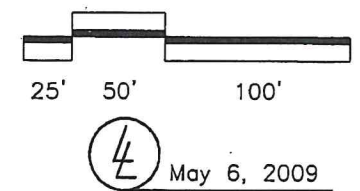
ASSESSOR'S PARCEL MAP

- THIS MAP WAS PREPARED FOR ASSESSMENT PURPOSES ONLY.
- NO LIABILITY IS ASSUMED FOR THE ACCURACY OF THE DATA SHOWN.
- ASSESSOR'S PARCELS MAY NOT COMPLY WITH LOCAL LOT-SPLIT OR BUILDING SITE ORDINANCES.

RS, Bk 10 of surveys, Pgs 8-9
 RS, Bk 10 of surveys, Pg 48
 RS, Bk 57 of surveys, Pg 84
 NEW RIO DELL TRACT: MAPS 11 P 48
 1ST ADDN TO RIO DELL TRACT: MAPS 11 P 77
 RIO DELL: MAPS 6 P 28

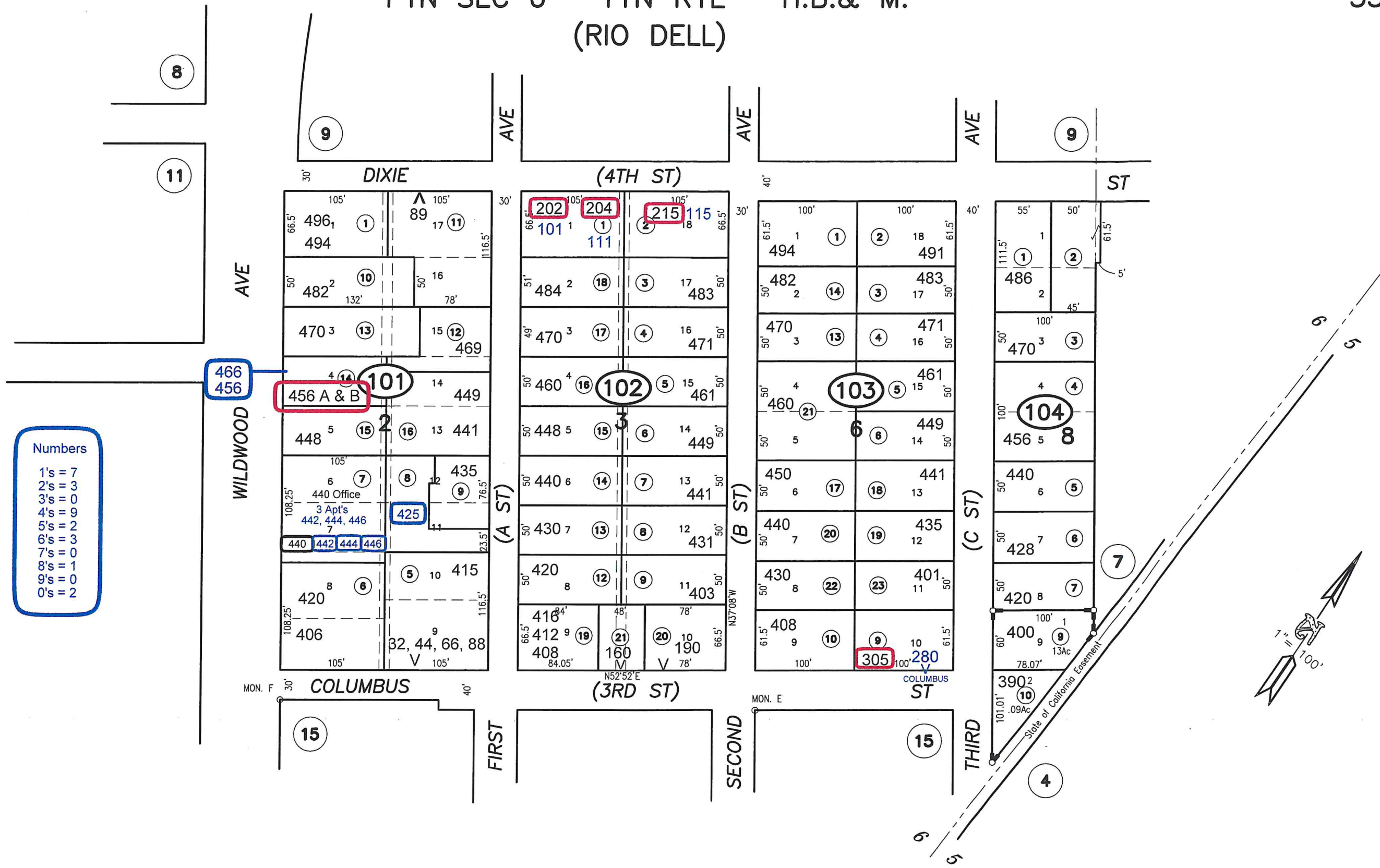
NOTE - Assessor's Block Numbers Shown in Ellipses
 Assessor's Parcel Numbers Shown in Circles.

Assessor's Map Bk. 53, Pg.09
 County of Humboldt, CA.



PTN SEC 6 T1N R1E H.B.& M.
(RIO DELL)

53-10

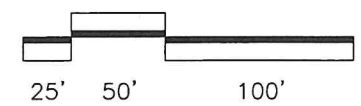


Numbers
 1's = 7
 2's = 3
 3's = 0
 4's = 9
 5's = 2
 6's = 3
 7's = 0
 8's = 1
 9's = 0
 0's = 2

ASSESSOR'S PARCEL MAP
 1. THIS MAP WAS PREPARED FOR ASSESSMENT PURPOSES ONLY.
 2. NO LIABILITY IS ASSUMED FOR THE ACCURACY OF THE DATA SHOWN.
 3. ASSESSOR'S PARCELS MAY NOT COMPLY WITH LOCAL LOT-SPLIT OR BUILDING SITE ORDINANCES.

RS, Bk 10 of surveys, Pgs 8-9
 RS, Bk 10 of surveys, Pg 48
 RM, Bk 11 of MAPS, Pg 48
 "New Rio Dell Tract"
 RM, Bk 11 of MAPS, Pg 77
 "1ST Addn to New Rio Dell Tract"
 PM3480 of PM Bk 34, Pgs 15-16

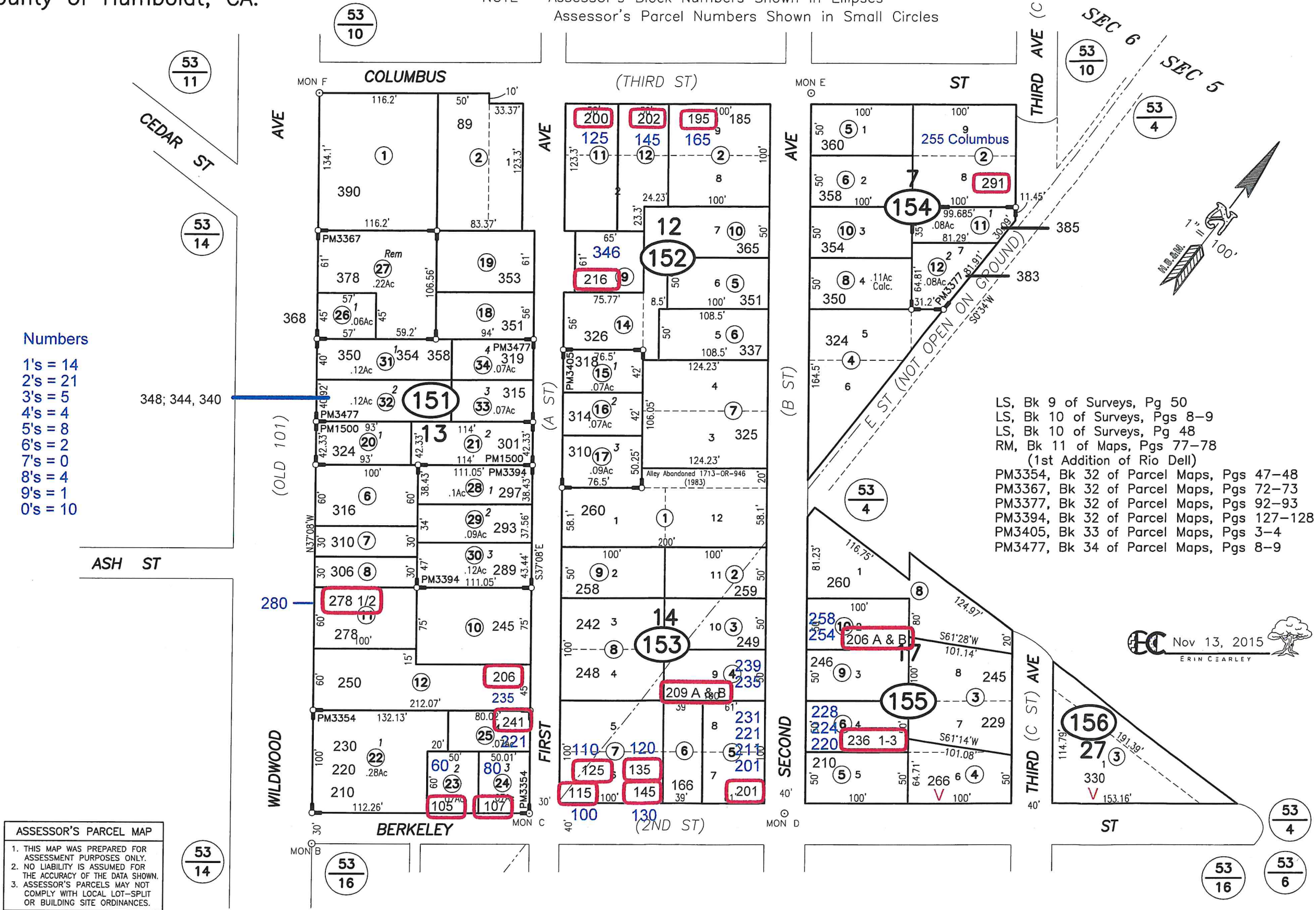
NOTE - Assessor's Block Numbers Shown in Ellipses
 Assessor's Parcel Numbers Shown in Small Circles
Assessor's Map Bk. 53, Pg.10
County of Humboldt, CA.



EC Jul 17, 2013

PTN SECS 5 & 6, T1N R1E, H.B.& M.

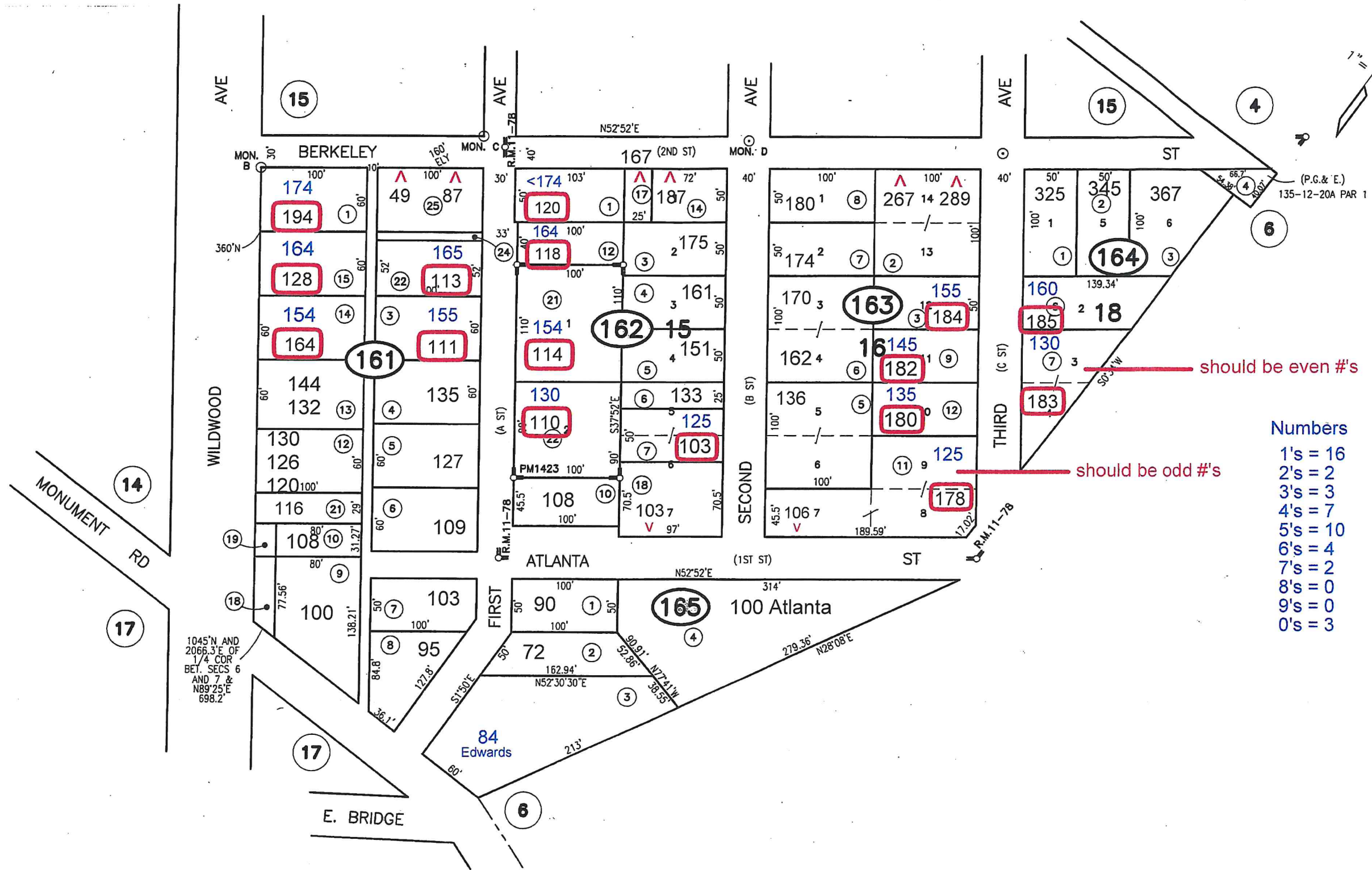
NOTE - Assessor's Block Numbers Shown in Ellipses
Assessor's Parcel Numbers Shown in Small Circles



EC Nov 13, 2015
ERIN CEARLEY

ASSESSOR'S PARCEL MAP

1. THIS MAP WAS PREPARED FOR ASSESSMENT PURPOSES ONLY.
2. NO LIABILITY IS ASSUMED FOR THE ACCURACY OF THE DATA SHOWN.
3. ASSESSOR'S PARCELS MAY NOT COMPLY WITH LOCAL LOT-SPLIT OR BUILDING SITE ORDINANCES.



Numbers
 1's = 16
 2's = 2
 3's = 3
 4's = 7
 5's = 10
 6's = 4
 7's = 2
 8's = 0
 9's = 0
 0's = 3

RM, Bk 11 of MAPS, Pg 78
 "1ST Add. New Rio Dell"
 RS, Bk 9 of surveys, Pg 50
 RS, Bk 10 of surveys, Pgs 8-9
 RS, Bk 10 of surveys, Pg 48
 PM1423 of PM Bk 12, Pg 94
 RS, Bk 53 of surveys, Pg 18
 RS, Bk 55 of surveys, Pg 56

ASSESSOR'S PARCEL MAP
 1. THIS MAP WAS PREPARED FOR ASSESSMENT PURPOSES ONLY.
 2. NO LIABILITY IS ASSUMED FOR THE ACCURACY OF THE DATA SHOWN.
 3. ASSESSOR'S PARCELS MAY NOT COMPLY WITH LOCAL LOT-SPLIT OR BUILDING SITE ORDINANCES.

NOTE - Assessor's Block Numbers Shown in Ellipses
 Assessor's Parcel Numbers Shown in Circles.

Assessor's Map Bk. 53, Pg.16
 County of Humboldt, CA.

